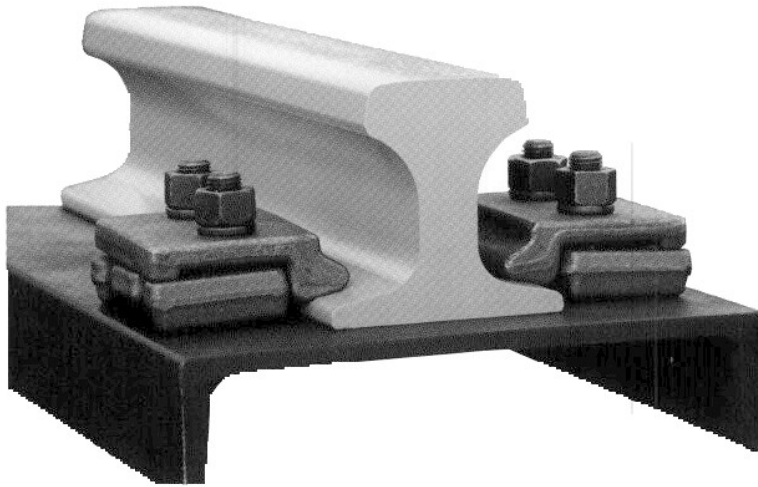
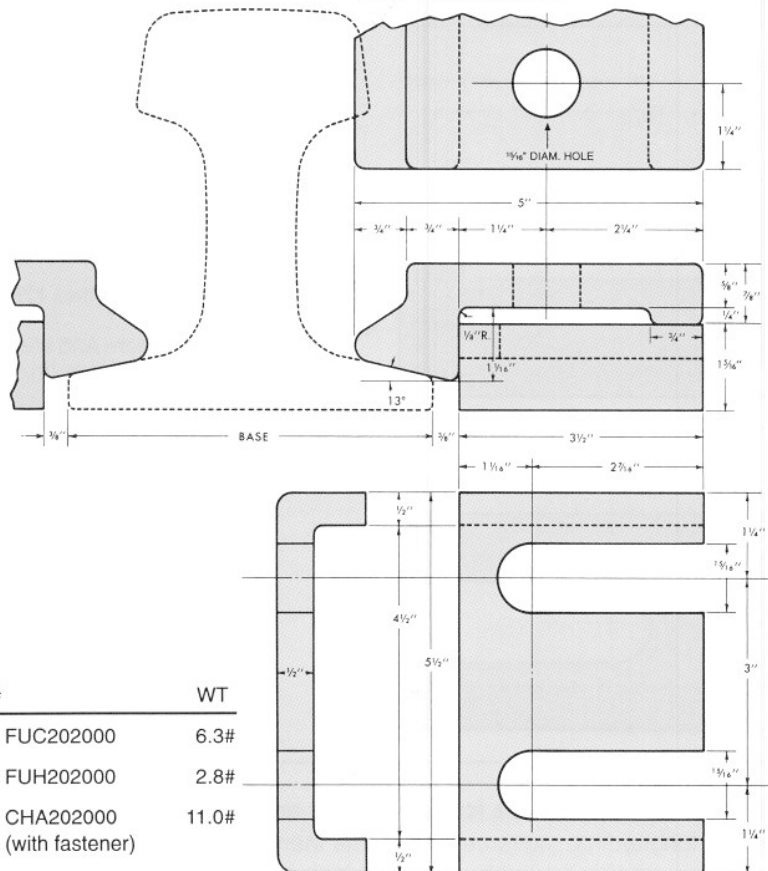


No. 202

Adjustable Forged Double Clip and Holder



Includes:
 2-7/8" -9x3 A 325 Hex Head Bolt
 2-7/8" -9 Heavy Hex Nut
 2-7/8" Lock Washer



Recommended 3 foot on center.

Added strength of double bolt mounting.

Adjustable in field for rail alignment.

High resistance to lateral movement and rail turnover.

Weld in place.

Suitable for all crane rail sections

80# thru 175#

Forged from A36 steel.

Eliminates need for making holes in top of girder.

- Used as a tight or loose fit.
- 100% made in U.S.A.

STK#	WT
Clip FUC202000	6.3#
Holder FUH202000	2.8#
Assembly CHA202000 (with fastener)	11.0#