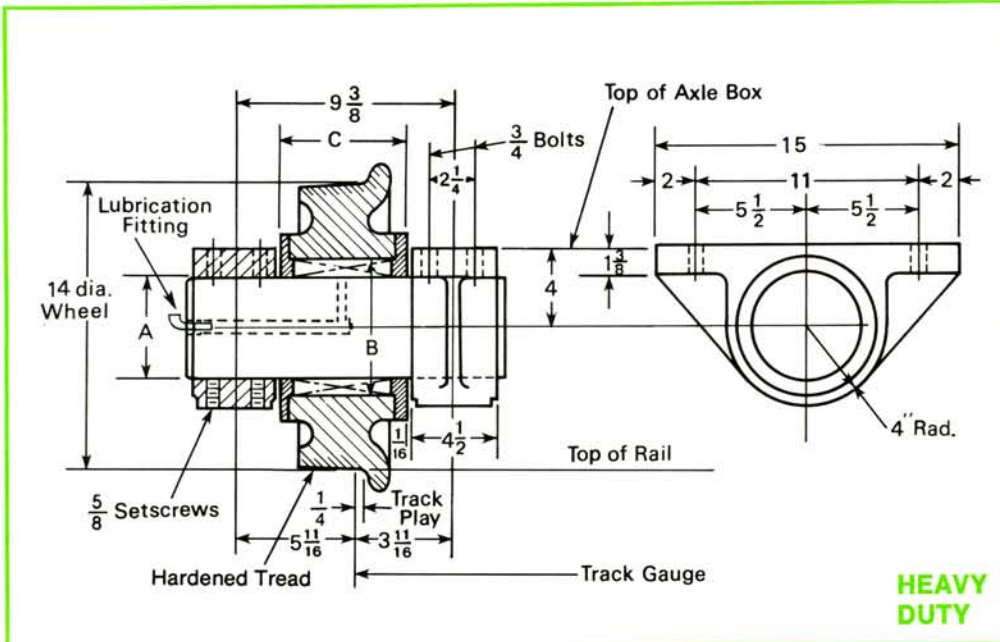




EXTRA HI-TEMP WHEEL ASSEMBLY



The 3 and 5 ton Extra High-Temperature Wheel Assembly includes:

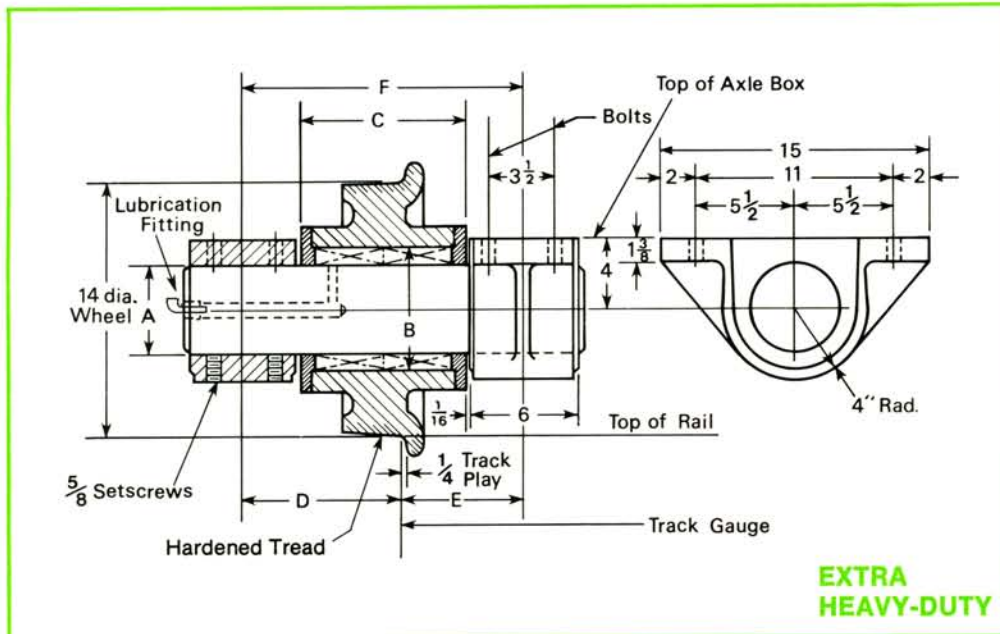
- 1—Wheel
- 2—Axle boxes, high-grade cast iron
- 1—Die steel caged roller bearing
- 1—Axle with lube fitting—C1045 cold rolled steel for 700°F. operation and stainless steel for 1000°F. and 1200°F. operation

Wheel diameters 10" thru 20" are available

HEAVY DUTY

700° F. - 1200° F. SERIES Model No. ET-101

CAPACITY	AXLE DIA. A	WHEEL BORE B	DISTANCE THRU WHEEL C	APP. ASSEM. WEIGHT
3 ton	3 3/8"	4 7/8"	4 3/4"	240 lbs.
5 ton	4"	5 1/2"	4 3/4"	255 lbs.



The 10-15 ton Extra High-Temperature Wheel Assembly includes:

- 1—Wheel
- 2—Axle boxes, high-grade cast iron
- 2—Die steel caged roller bearings
- 1—Axle with lube fittings—C1045 cold rolled steel for 700°F. operation and stainless steel for 1000°F. and 1200°F. operation

- Load ratings are based on 50 RPM. RPM's greater than 50 are available.
- Operating temperature 700°F. - 1000°F. - 1200°F.
- Wheel diameter 10" - 20".
- Units are completely assembled, painted, lubricated and ready for installation.

EXTRA HEAVY-DUTY

700° F. - 1200° F. SERIES Model No. ET-102

CAPACITY	AXLE DIA. A	WHEEL BORE B	DISTANCE THRU WHEEL C	D	E	F	APP. ASSEM. WEIGHT
10 ton	3 3/8"	4 7/8"	8 1/4"	7 11/16"	6 11/16"	14 3/8"	360 lbs.
12 ton	4"	5 1/2"	8 1/4"	7 11/16"	6 11/16"	14 3/8"	370 lbs.
15 ton	5"	6 7/8"	9 1/4"	8 3/16"	7 3/16"	15 3/8"	380 lbs.