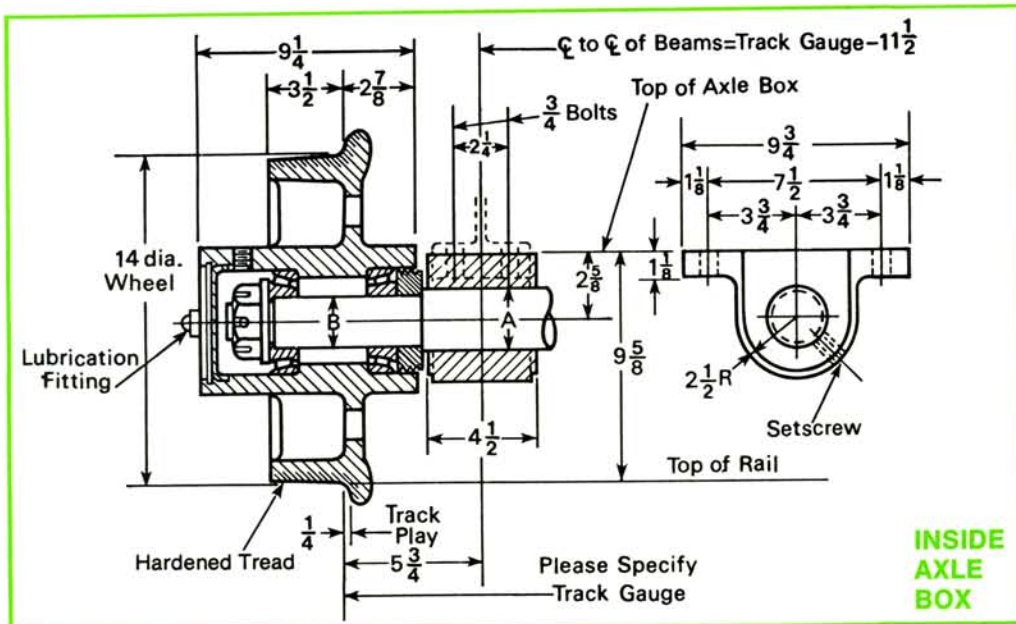




THRU AXLE WHEEL ASSEMBLY



Model No. TA-101

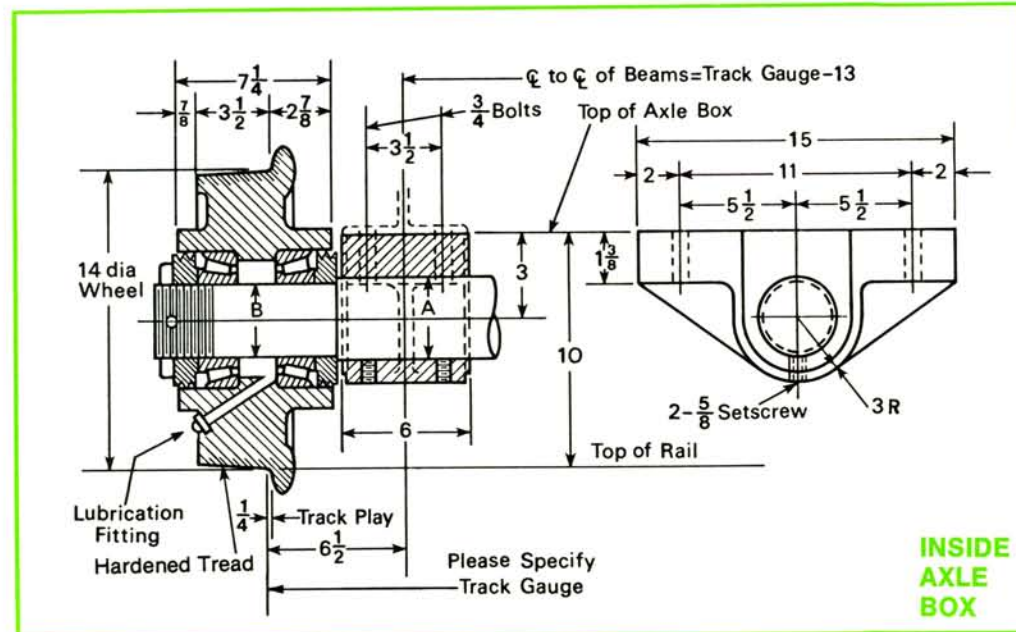
The 1 through 8 ton Inside Axle Box Thru Axle Wheel Assembly includes the following:

- 2—Wheels with lube fittings
 - 2—Axle boxes—high-grade cast iron
 - 2—Wheel sets of tapered roller bearings, including nuts and dust collars
 - 1—Axle C1045 hot rolled steel. Models are available with steel wheels ranging from 10" through 24" diameters
- Please Specify Track Gauge

INSIDE
AXLE
BOX

Ratings shown are for 56 1/2" track gauge or less.

CAPACITY	SHAFT DIA. A	SHAFT DIA. B	WT.
1 ton/axle	1 5/8"	1 3/8"	335 lbs.
3 ton/axle	2 1/4"	2"	365 lbs.
6 ton/axle	2 3/4"	2 1/2"	400 lbs.
8 ton/axle	3"	2 3/4"	425 lbs.



Model No. TA-102

The 10 and 15 ton Inside Axle Box Thru Axle Wheel Assembly includes the following:

- 2—Wheels with lube fittings 10" thru 24" diameter are available
 - 2—Axle boxes—high-grade cast iron
 - 2—Wheel sets of tapered roller bearings including dust collars
 - 1—Axle C1045 hot rolled steel
- Load ratings are based on 50 RPM. RPM's greater than 50 are available.
 - Operating temperature 300° F. maximum.
 - Units are completely assembled, painted, lubricated and ready for installation.

Please Specify Track Gauge

INSIDE
AXLE
BOX

Ratings shown are for 56 1/2" track gauge or less.

CAPACITY	SHAFT DIA. A	SHAFT DIA. B	WT.
10 ton	3 1/4"	3"	575 lbs.
15 ton	3 3/4"	3 1/2"	660 lbs.